

MUSIC SYMBOLS EXPLAINED

A quick guide for beginner piano players

CLEFS & TIME SIGNATURE



Treble Clef

The treble clef is used for higher notes. On piano, it is usually played by the right hand.



Bass Clef

The bass clef is used for lower notes. On piano, it is commonly played by the left hand.



Four Four Time Signature

The four four time signature means there are four beats in each measure.

NOTES (SOUNDS)



Whole Note

A whole note is held for four beats in common time. It has an open oval shape with no stem.



Half Note

A half note lasts for two beats. It has an open note head and a stem.



Quarter Note

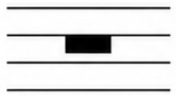
A quarter note usually lasts for one beat. It is one of the first note values new piano players learn.



Two Eighth Notes

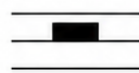
Two eighth notes together often equal one beat. They move faster than quarter notes and create lively rhythms.

RESTS (SILENCE)



Whole Rest

A whole rest means silence for a full measure in common time. It hangs down from a staff line.



Half Rest

A half rest means silence for two beats. It sits on top of a staff line.



Quarter Rest

A quarter rest means silence for one beat. It gives your hands a short pause before playing again.